



SUBMITTAL : ECO-HPSTD-12 Heat Pump Mounting Stand



Job Name _____
 Purchaser _____
 Submitted to _____
 Unit Designation _____

Location _____
 Engineer _____
 Reference Approval Construction
 Schedule # _____

Specifications	ECO-HPSTD-12
Physical Data	
Material	16 GA Steel
Maximum Stand Width	43"
Stand Cross Bar Length	20 1/2"
Weight	22lbs
Mounting	
Stand Max Mounting Weight	176lbs

Construction

Mounting Bracket shall be constructed from 16 GA steel with a baked on powder coating for corrosion resistance

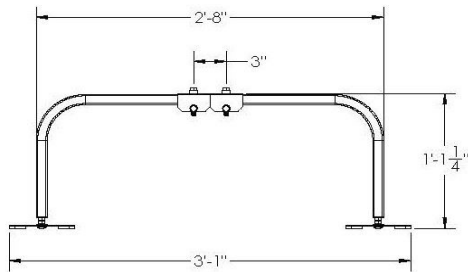
Installation

Heat Pump Stand shall consist of cross bars that can be adjusted in position for the mounting of the SANCO₂ Heat Pump and the depth of the Stand set to match the width of SANCO₂ mounting feet brackets

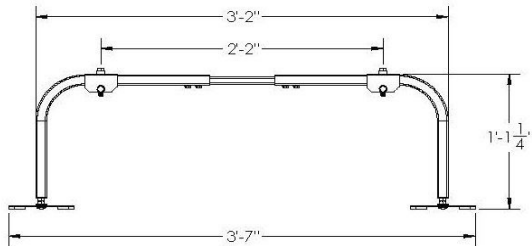
The Heat Pump Stand shall provide the platform to raise the SANCO₂ unit 12" above snow, allow access to the Air Bleed screw and Condensate drain from the unit SANCO₂ unit shall be fastened to the Heat Pump Stand using the bolts and anti-vibration washers provided

Application

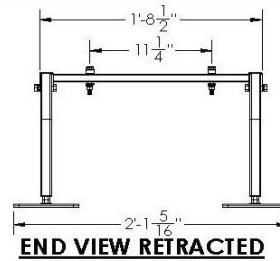
Heat Pump Stand shall allow the SANCO₂ unit to be mounted on a concrete or other material/ground floor as required by the building type



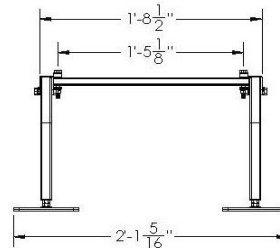
SIDE VIEW RETRACTED



SIDE VIEW EXPANDED



END VIEW RETRACTED



END VIEW EXPANDED