

# Water Pump Replacement



Replacement of the Water Pump should only be attempted/ completed by an certified contractor/installer and after error code has been diagnosed to clearly indicate a Pump failure.

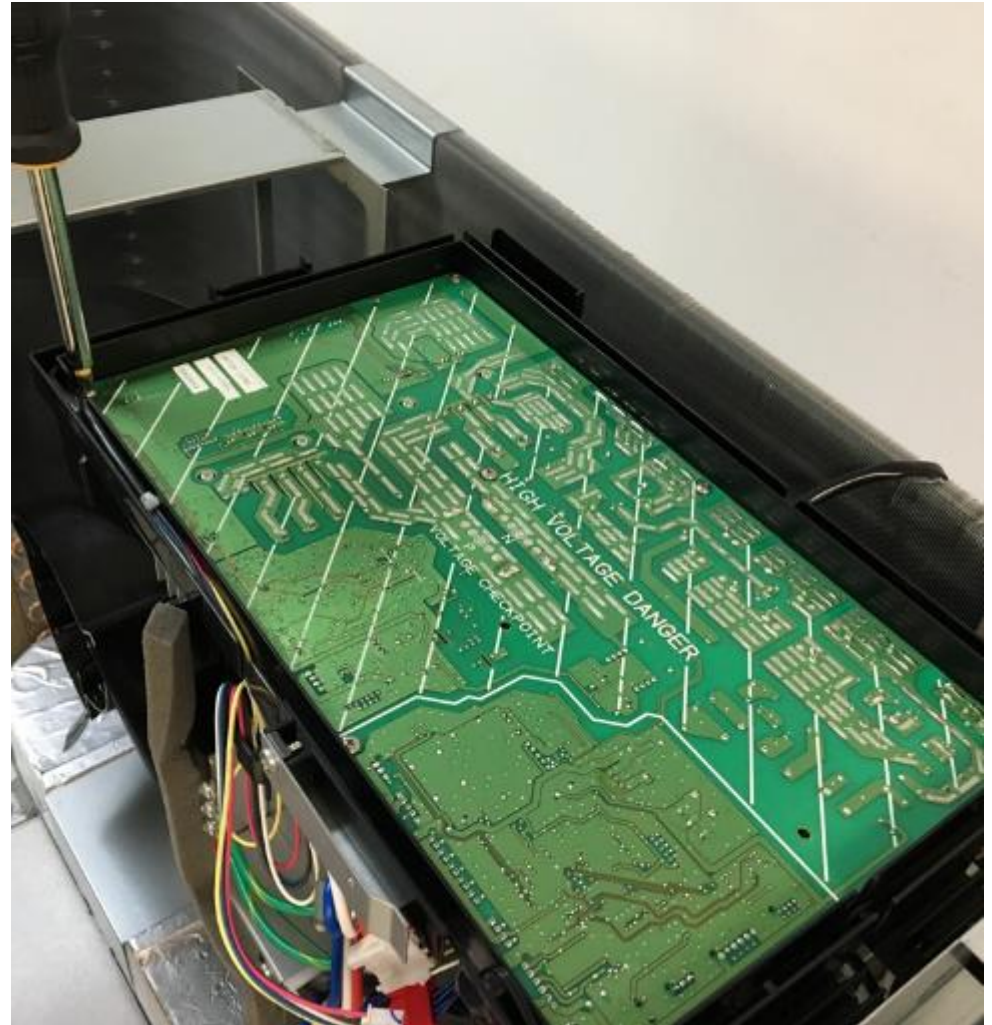
Tools required :

Standard Phillips screwdriver

Replacement Water Pump

Optional:

Small plastic bags or containers for screws



If you have questions or need advice during the PCB replacement process  
Please call 1-844-726-3262 x 403



# Water Pump Replacement



Step 1:

**Disconnect unit from Power –  
Lock out power supply**

**Close Water Shut off valves  
and Drain Water from Heat  
Pump**

Remove unit Top cover, 4 x Philips  
head screws

TIP – Note which way Top cover  
installs, label to rear on LHS

Remove unit Front cover, 5 x Philips  
head screws

TIP - Front cover has locating tabs,  
pull up and slightly away to remove  
front cover once the screws are  
removed



# Water Pump Replacement



## Step 2:

Remove Pump Cover

3 Philips head Screws

TIP – A long handled screwdriver is easier to use than a cordless drill type

Unit Fan blade may need to be rotated to access screws

Note : Store screws carefully, Pump Cover and mounting bracket screws are different to Cover and Lid screws





# SANCO<sub>2</sub> Water Pump Replacement



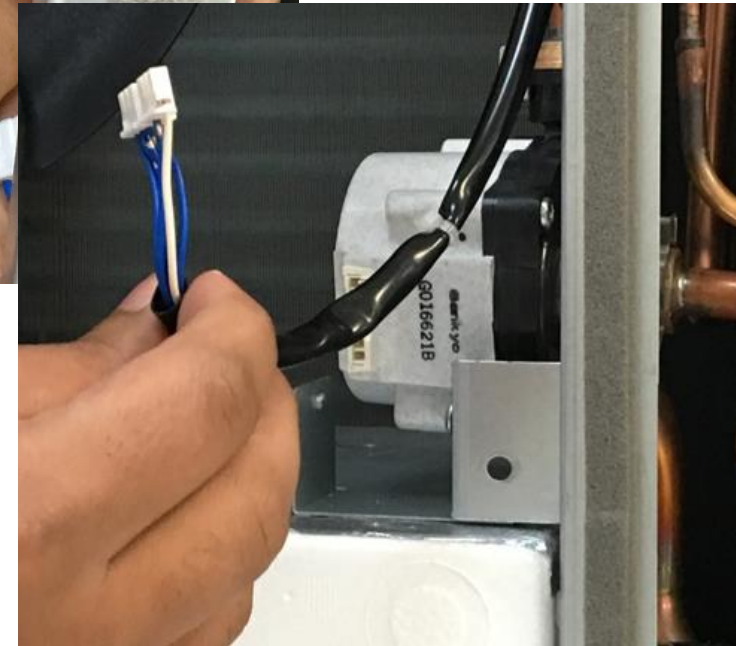
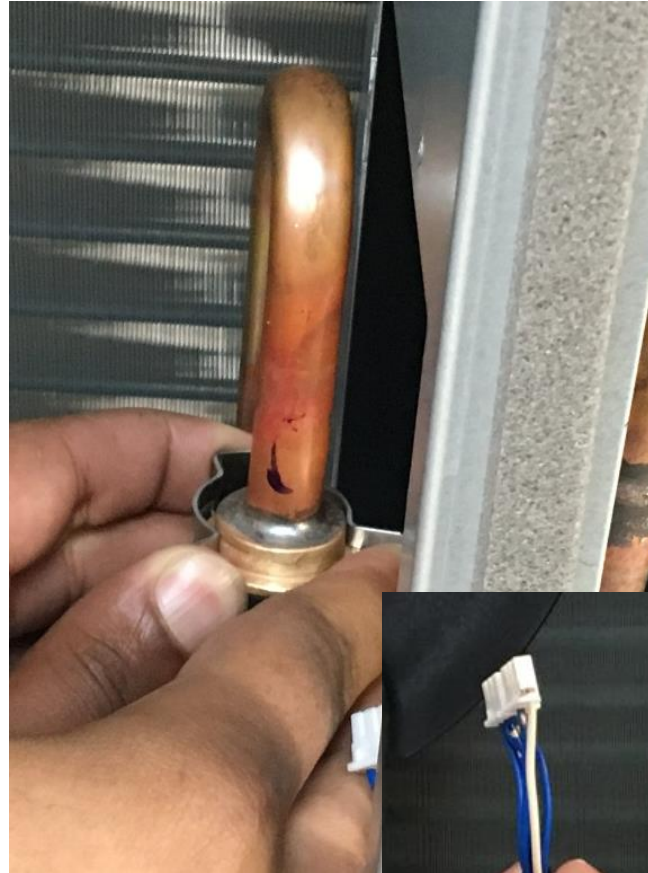
## Step 3:

**Carefully** remove Pipe Clips holding piping to Pump Inlet and Outlet

TIP – Bending or warping of the clips during removal may lead to gaps and could cause water leaks

Remove Wiring Plug from Pump

Depress the white plastic tab in the center and gently pull it from the pump.



# Water Pump Replacement

## Step 4:

**Carefully** pull pipes out of the Pump connections and remove Pump from the unit

Inspect both Inlet & Outlet connection O-Rings for nicks, tears, gouges, etc

Replace O-Rings if necessary



# Water Pump Replacement

## Step 5:

Remove Pump from mounting bracket – 2 Philips head screws

Mount bracket onto replacement pump and fit into unit





# Water Pump Replacement

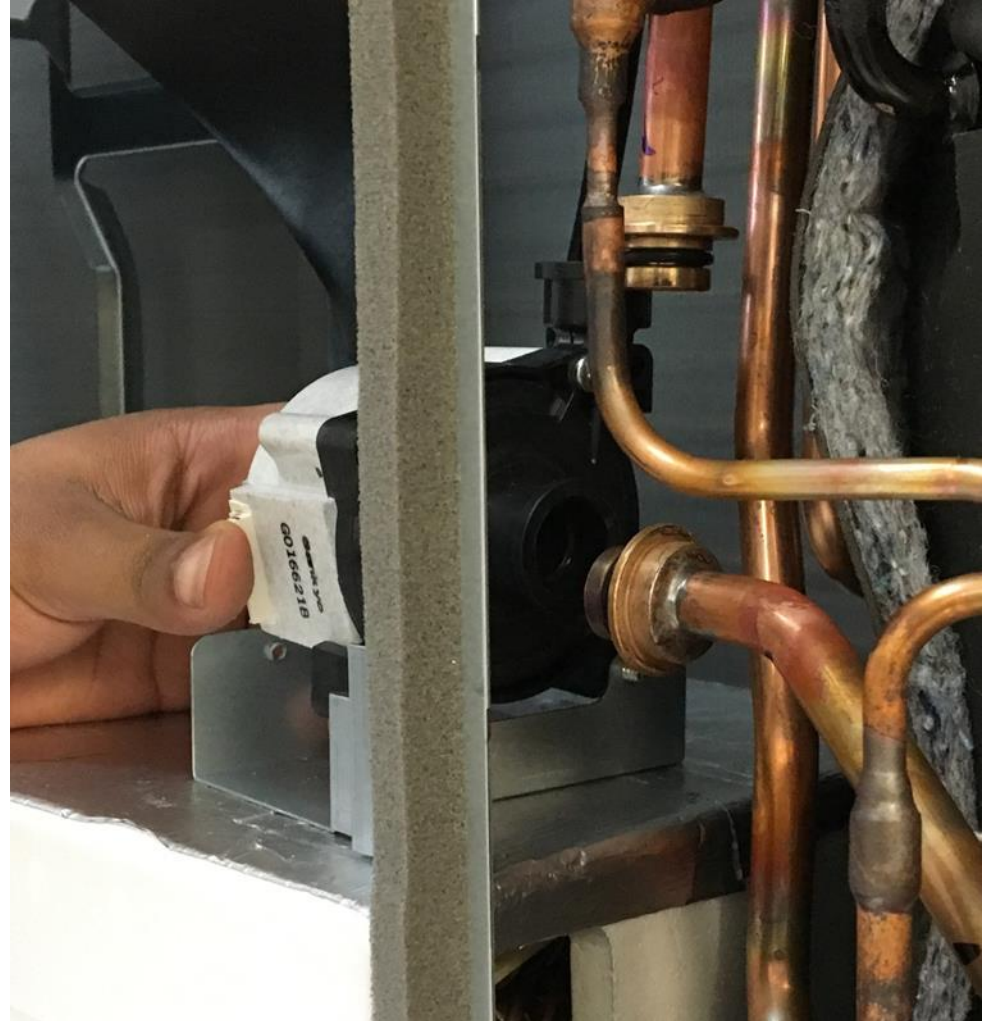
## Step 6:

Carefully orient replacement Pump to correct location

**Very Gently** push in Inlet and Outlet Water pipes into the Pump connections

Secure connections using Pipe Clips, ensure connections are flush for a water tight seal

Replace Pump Cover and tighten 3 screws securing it in place



# Water Pump Replacement



## Step 7:

Reattach the front cover and secure using the 5 screws. TIP – locate tabs into slots first when reinstalling cover

Reattach the lid to the unit using the 4 screws. TIP – install lid on coil end of unit first, then compressor end

Open Water Valves and fill Heat Pump

Open Bleed screws to remove air from Heat Pump

Restore power to the unit

Based on the tank temperature unit may or may not run. Run faucet until unit starts

Check display to ensure no error codes are displayed

