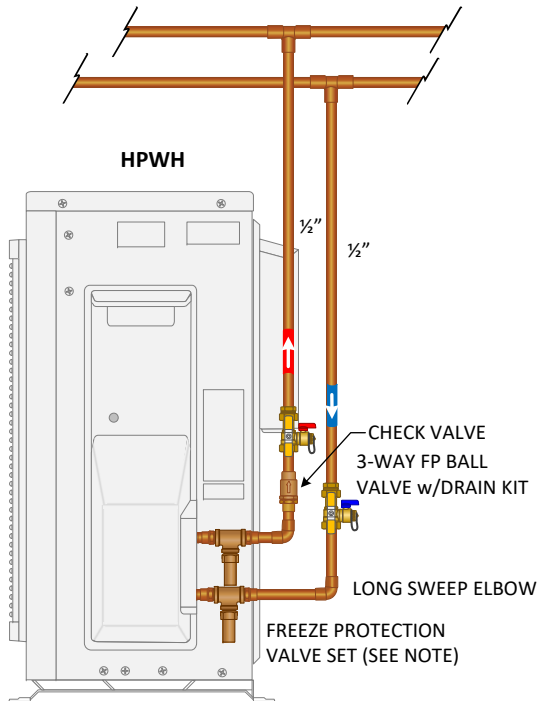
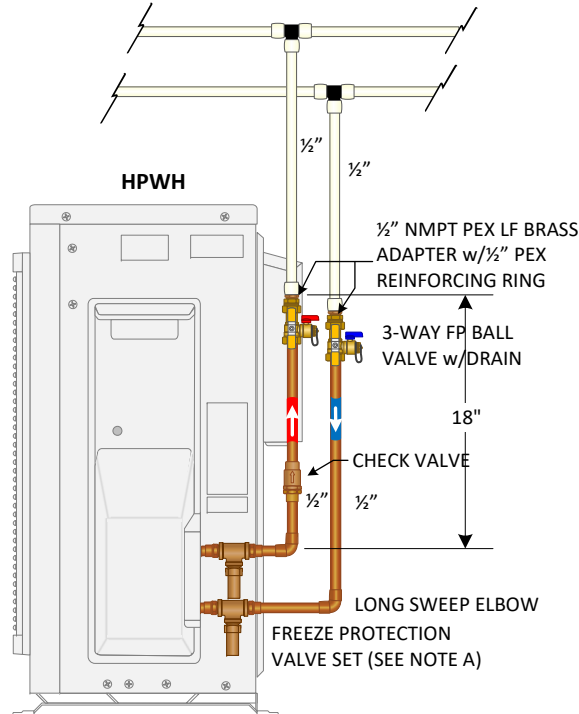


HEAT PUMP WATER HEATER PIPING DETAIL (HPWH)



PIPING DETAIL A
WITH COPPER PIPE



PIPING DETAIL B
WITH PEX PIPE

NOTES

NOTE A: TO PREVENT DAMAGE TO THE HPWH, WHERE TEMPERATURES ROUTINELY DROP BELOW FREEZING, WE RECOMMEND A FREEZE PROTECTION VALVE SET.

NOTE B: AREAS WHERE WATER HARDNESS IS GREATER THAN > 200 PPM, IT MAY BE NECESSARY TO PERIODICALLY SERVICE THE HPWH HEAT EXCHANGER. WE RECOMMEND INSTALLING A SERVICE VALVE FLUSH KIT TO THE HPWH. INSTRUCTIONS ON HOW TO DO THE PROCEDURE IS EXPLAINED IN OUR SANCO₂ TECHNICAL MANUAL.

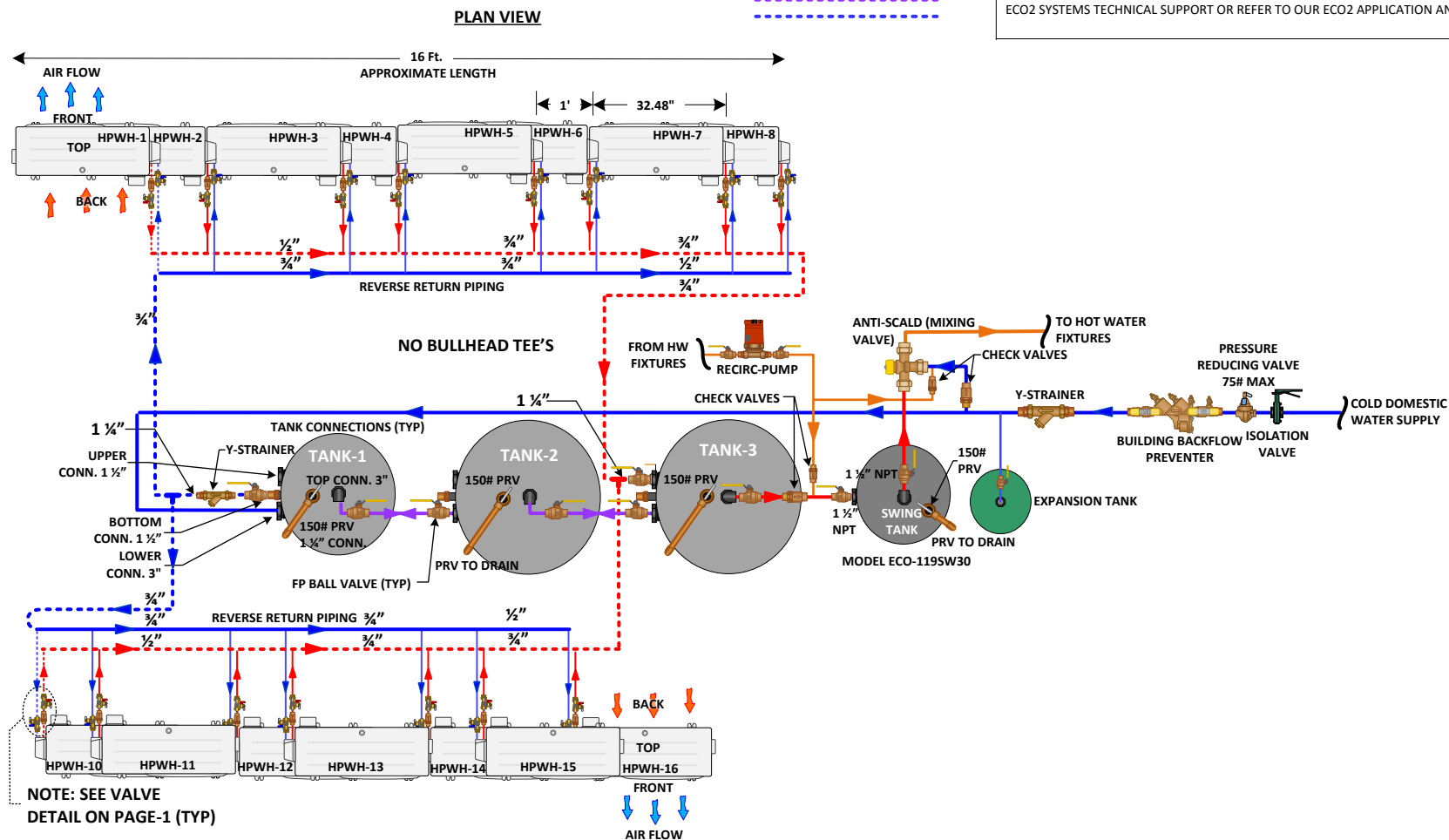
NOTE C: INSULATE ALL PIPING PER CODE.

NOTE D: CHECK WITH LOCAL JURISDICTIONS FOR CODE REQUIREMENTS. SOME AREAS REQUIRE 18 INCHES OF COPPER PIPE AT THE HOT WATER HEATER OUTLET CONNECTION BEFORE TRANSITIONING TO PEX.

NOTE:
DASHED LINES REPRESENT CRITICAL
PIPING PATH. REFER TO ECO2
APPLICATION AND DESIGN MANUAL ON
HOW TO DETERMINE TOTAL
EQUIVALENT LENGTH (T.E.L.) DO NOT
EXCEED 66 FEET OF T.E.L.

NOTE A: TO PREVENT DAMAGE TO HWWP'S INTERNAL COMPONENTS, WE MUST LIMIT THE INCOMING BUILDING WATER PRESSURE TO A MAXIMUM OF 75 PSI. THIS INCLUDES CALCULATING STATIC PRESSURE PLUS INCOMING WATER PRESSURE. THIS CAN BE CONTROLLED BY SELECTING A PROPERLY SIZED PRESSURE REDUCING VALVE.

NOTE B: MAXIMUM DISTANCE OF SEPARATION FROM THE FURTHEST HPWH TO THE FURTHEST STORAGE TANK IS 66 FEET. THE DESIGNER/ENGINEER MUST ACCOUNT FOR TOTAL EQUIVALENT LENGTH OF PIPE & FITTING PLUS STRAIGHT PIPE ALONG THE CRITICAL PIPING PATH. CONSULT WITH ECO2 SYSTEMS TECHNICAL SUPPORT OR REFER TO OUR ECO2 APPLICATION AND DESIGN MANUAL.



MODEL ECO-4555GLNST	
STORAGE TANK CONNECTIONS	
COLD WATER INLET	3" FEMALE NPT
HOT WATER OUTLET	3" MALE NPT
COLD WATER TO HP	1 ½" FEMALE NPT
HOT WATER FROM HP	1 ½" FEMALE NPT

MODEL ECO-4360LNST	
STORAGE TANK CONNECTIONS	
COLD WATER INLET	3" FEMALE NPT
HOT WATER OUTLET	3" MALE NPT
COLD WATER TO HP	1 ½" FEMALE NPT
HOT WATER FROM HP	1 ½" FEMALE NPT

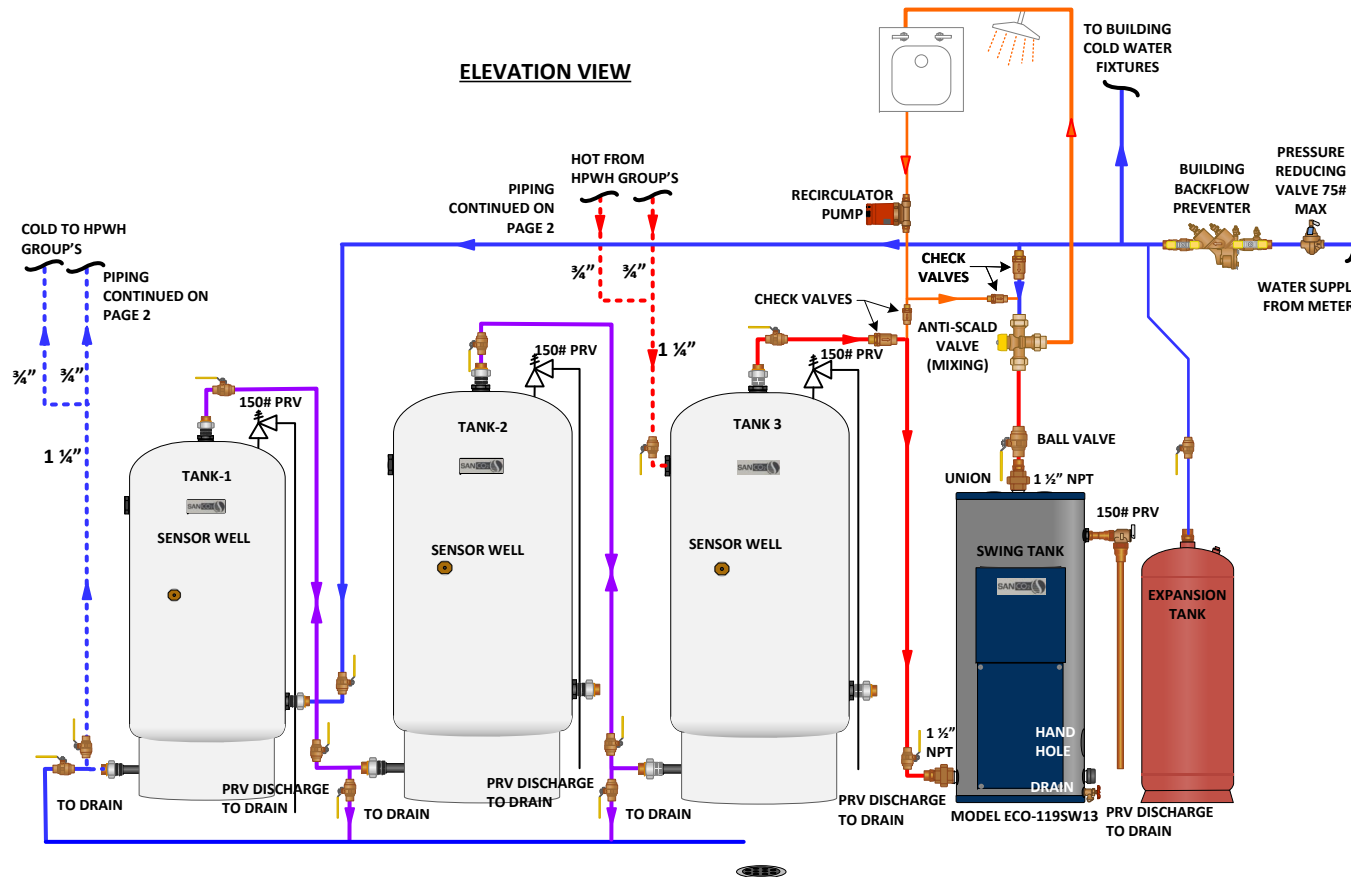
HPWH MODEL's GS5-45HPC & GS5-45HPC-D	
HOT WATER OUTLET CONN.	½" NMPT
COLD WATER INLET CON.	½" NMPT
ALL PIPING & CONNECTIONS TO MAIN HEADERS CAN BE ½" COPPER OR PEX	

NOTE:
DASHED LINES REPRESENT CRITICAL
PIPING PATH. REFER TO ECO2
APPLICATION AND DESIGN MANUAL ON
HOW TO DETERMINE TOTAL
EQUIVALENT LENGTH (T.E.L.) DO NOT
EXCEED 66 FEET OF T.E.L.



NOTE A: TO PREVENT DAMAGE TO HWHP'S INTERNAL COMPONENTS, WE MUST LIMIT THE
INCOMING BUILDING WATER PRESSURE TO A MAXIMUM OF 75 PSI. THIS INCLUDES CALCULATING
STATIC PRESSURE PLUS INCOMING WATER PRESSURE. THIS CAN BE CONTROLLED BY SELECTING A
PROPERLY SIZED PRESSURE REDUCING VALVE.

NOTE B: MAXIMUM DISTANCE OF SEPARATION FROM THE FURTHEST HPWH TO THE FURTHEST
STORAGE TANK IS 66 FEET. THE DESIGNER/ENGINEER MUST ACCOUNT FOR TOTAL EQUIVALENT
LENGTH OF PIPE & FITTING PLUS STRAIGHT PIPE ALONG THE CRITICAL PIPING PATH. CONSULT WITH
ECO2 SYSTEMS TECHNICAL SUPPORT OR REFER TO OUR ECO2 APPLICATION AND DESIGN MANUAL.



MODEL ECO-455GLNST

STORAGE TANK CONNECTIONS

COLD WATER INLET	3" FEMALE NPT
HOT WATER OUTLET	3" MALE NPT
COLD WATER TO HP	1 1/2" FEMALE NPT
HOT WATER FROM HP	1 1/2" FEMALE NPT

MODEL ECO-4360LNST

STORAGE TANK CONNECTIONS

COLD WATER INLET	3" FEMALE NPT
HOT WATER OUTLET	3" MALE NPT
COLD WATER TO HP	1 1/2" FEMALE NPT
HOT WATER FROM HP	1 1/2" FEMALE NPT

HPWH MODEL'S GS5-45HPC & GS5-45HPC-D

HOT WATER OUTLET CONN.	1/2" NMPT
COLD WATER INLET CON.	1/2" NMPT
ALL PIPING & CONNECTIONS TO MAIN HEADERS CAN BE 1/2" COPPER OR PEX	